



Horticultural Society of Middle Tennessee

AT CHEEKWOOD ESTATE & GARDENS

SPRING 2022



From our President, Carla Nelson

As I begin my 4th and final year as HSMT president, I can't help but reflect on all that's happened the last 3 years. What started as a business-as-usual presidency turned into one unexpected surprise after another! Our wonderful HSMT Administrator Lisa Ward-Smith learned she was moving to Texas, and we started our search for her replacement. Thankfully, Elizabeth Ralph accepted the position and has worked tirelessly on our behalf. She's been amazing and indispensable. Then COVID threw a wrench into our plans and forced us to cancel membership meetings and fundraising events. Because of your generous Patron donations and Doorstep Dinners, we were able to raise significant funds.

Fingers crossed, but it looks like we'll finally see the return of "normal". We all enjoyed a very successful in-person Sparkling Settings and Community Flower Show. On May 23rd, we'll host our Spring Membership Meeting at the beautifully renovated Botanic Hall. I hope you will all plan to attend.

As your president, I am honored to represent HSMT on Cheekwood's Board of Trustees and serve on 3 of their committees – Garden Committee, Facilities Committee, and Fundraising Committee. I look forward to sharing exciting details in upcoming newsletters.

Thank you for your support of HSMT! I hope to see you on May 23rd!

Carla

HORTICULTURAL SOCIETY OF
MIDDLE TENNESSEE

Annual Spring Membership Meeting

SIP, SEE & SOME HISTORY

MAY 23, 2022 | 10AM - 12 NOON
BOTANIC HALL, CHEEKWOOD

Come see the Newly Remodeled Botanic Hall
& learn about HSMT's history and role in this
beloved building

Complimentary for HSMT members and their guests
interested in learning more about HSMT Auxiliary
membership

HSMT Auxiliary membership is open to all who would
like to join



History of the Horticultural Society

by Gayle Jagers

HSMT Established in 1931

For those of you who are recent members or those who may not know, the Horticultural Society of Davidson County was formed in 1931 with an early emphasis on landscape design and flower show schools. The society was funded by home and garden tours. Sears, Roebuck and Company invited the Horticultural Society to participate in a program called HANDS (Home and Neighborhood Development Sponsors). The project, funded by the Sears Foundation, led to numerous outstanding civic and community projects with school clean-ups and the landscaping of public and historical buildings as well as award winning flower shows. Sears provided an office, library, and meeting place for garden clubs throughout the southeastern states.

The Horticultural Society was one of three founders of Cheekwood Botanical Garden and Museum of Art. The society's first office was in the Cheekwood Mansion. In 1971, the Horticultural Society contributed \$100,000 toward the building of Botanic Hall, and its office has been located there ever since the building was constructed. HSMT continues to contribute thousands of dollars to Cheekwood each year.

For more history and advice from Gayle, see the [full article](#) on the HSMT website and make plans to attend the [Sip, See and some History](#) meeting when the newly renovated Botanic hall is unveiled.

(Invitation above)

Sparkling Settings

in a new Setting



A generous donation from the Horticultural Society was presented to Jane MacLoed by HSMT President Carla Nelson.

Many memories of sparkling tabletops and holiday cheer are shared by Garden Club friends and Horticultural Society members, but due to pandemic precautions at Cheekwood, the 2021 format for our event was changed to a NEW SETTING.

***Green Door Gourmet* opened its doors to a capacity crowd of Garden Club members who enjoyed a more casual day of**

Fine hors d'oeuvres

Festive holiday beverages

Fun and shopping with friends

Sparkling Settings
in a new Setting

Grace Awh, Liza Lentz and Sallie Swor
Members of Town and Country Garden Club
envisioned and planned
Sparkling Settings in a NEW setting!



love
and
joy

2021 Chairmen celebrate a successful event

**Horticultural
Society
members still
set the
prettiest tables
at home!**



Gardens of the Community Flower Show



HSMT's 2022 Community Flower Show continued a tradition once held at The War Memorial Auditorium that brought about the formation of HSMT in 1931. Held every two years, this is a major national flower show based on The National Federation of Garden Club Standards

***Green Door Gourmet* graciously hosted this year's show which included a luncheon, beverage station and garden tour.**

Gardens of the Community Flower Show

Many thanks to this year's Community Flower Show Chair Denise Thorn and her outstanding committee!



Gardens of the Community Flower Show

**Congratulations to the Community Flower
Show Winners!**



Emerald Ash Borer Advisory

Have you Started your EAB Management Plan?

Nashville has many beautiful native ash trees in parks, on school grounds, along city streets and in private yards. Sadly, none of these ash trees are immune to the effects of the Emerald Ash Borer, an invasive insect pest rapidly spreading across Middle Tennessee. It is important for Nashvillians to have a plan on how to manage their ash trees.

Managing the Emerald Ash Borer epidemic includes three options: Treat your tree, Let it die or Remove it. Early spring is the time to select what is right for your tree. The longer a management plan is delayed, the more it will cost.

Treat it: Tree injection treatment with insecticides is the best choice at this point in the epidemic. This can be done by the homeowner or licensed professional every two years for the remaining healthy life of the tree. It's best to treat your tree before it is infested to help build resistance. Once there is more than 30% dieback of the crown, treatment may not be effective. If this is your management option, treatment should start now, as the trees are coming out of winter dormancy and will actively take up chemical treatments.

Let it die: If the tree is in the woods or on open area where its fall would not block access or cause physical or property damage, you can let it die naturally in place and decompose.

Remove it: If your tree would cause damage if it fell, you can be proactive and have your tree cut down before it dies. If it not accessible by a bucket truck, then it needs to be cut down before it becomes too brittle to climb. Infested ash trees can present a safety concern.

Emerald Ash Borer Advisory

Blue Dots on Ash Trees: There is an inventory of ash trees in active areas of Metro Parks. If one of these trees were to potentially fall and cause damage, it has been marked with a blue dot and will be removed. Also, ash trees in the public right-of-ways, generally areas near the streets, have also been identified for removal.

Reference Information

Metro EAB website: trees.nashville.gov,

**Managing the Emerald Ash Borer Epidemic in Nashville Brochure:
Website or call 615-862-5000**

**Schedule a free EAB speaker for your garden club
(virtual or in person):**

**Contact Jennifer Smith at Jennifer.smith3@nashville.gov
or 615-862-8708.**

The EAB Speaker's Bureau is presented by the Metro Tree Advisory Committee. The program will review how to identify ash trees, management options, tree owner's responsibility and how to hire an arborist.

The Metro Tree Advisory Committee's mission, working closely with city departments and non-profit partners, is to recommend tree policies, educate the community about the benefits of trees and proper tree planting and care, and promote tree planting and preservation.





**Flower
magazine
is always
inspiring!**



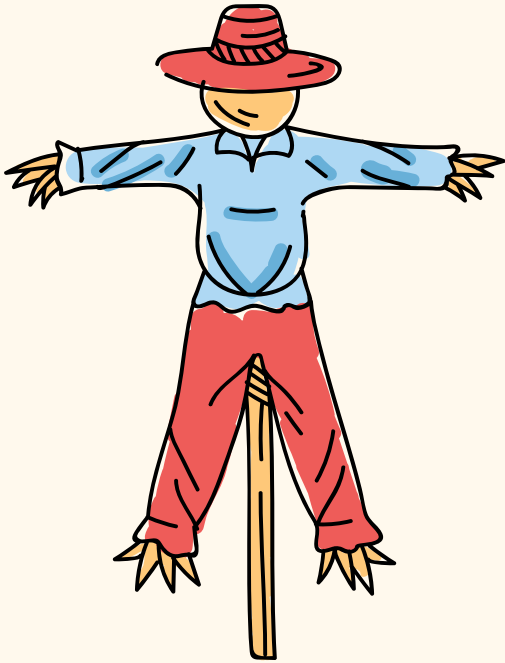
**Please
submit your
photos of
"what
inspires me
to garden"
and we will
feature as
many as
possible in a
future
newsletter.**

Recommended Speakers for your club meetings:

If you are looking for program ideas for your club, contact the HSMT office for a list of suggestions.



Idea for a Garden Club project:



**Sarah Humphreys,
Education Coordinator at
Cheekwood has
announced that the
popular Scarecrows
exhibit will take place
again this Fall.**

**Watch for applications
and plan for your club to
participate.**



SUPPORT US

Become a patron
of the
Horticultural
Society of Middle
Tennessee

*Thank
you!*

[DONATE HERE](#)